

Commutatore rotante radiale / Rotary Switch

6 (3) A 250V ac 5E4 - con 2-3-4-5-6-7-8 posizioni a 45°

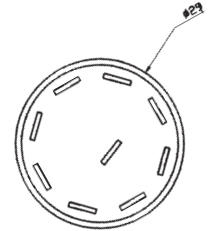
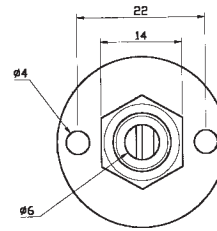
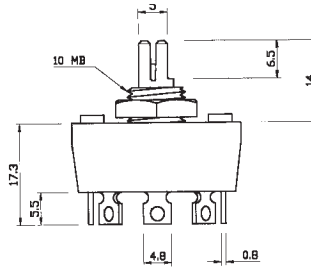
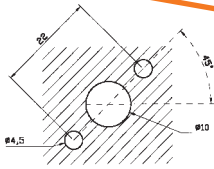
Terminali - Terminals:

in rame a saldare mm 4,8x0,8
 per C.S. mm 2,8x0,8
 cooper solder type mm 4,8x0,8
 for printed circus mm 2,8x0,8



In materiale termoplastico resistente a temperature di lavoro da 65°C sino a 120°C - Autoestinguento

Made in thermoplastic material for a working temperature from 65°C up to 120°C - Flame retardant



CODICE Code	FUNZIONE Function	SCHEMA ELETTRICO Circuit Diagram	DESCRIZIONE Description
R8.2	ON-OFF...		Commutatore rotante radiale 2 posizioni a 45° Rotary switch with 2 position
R8.3	ON-OFF...		Commutatore rotante radiale 3 posizioni a 45° Rotary switch with 3 position
R8.4	ON-OFF...		Commutatore rotante radiale 4 posizioni a 45° Rotary switch with 4 position
R8.5	ON-OFF...		Commutatore rotante radiale 5 posizioni a 45° Rotary switch with 5 position
R8.6	ON-OFF...		Commutatore rotante radiale 6 posizioni a 45° Rotary switch with 6 position
R8.7	ON-OFF...		Commutatore rotante radiale 7 posizioni a 45° Rotary switch with 7 position
R8.8	ON-OFF...		Commutatore rotante radiale 8 posizioni a 45° Rotary switch with 8 position